



Step right in – We are in the first blue house
at Old Harbour Village No.2.

The Cinema is part of the lively and friendly Old Harbour Village, downtown Reykjavik. Old fisherman's work places have been transformed into diverse attractions such as The Cinema, located in the loft of number 2.

The atmosphere of the old fisherman's place has been preserved as much as possible, making the Cinema both cozy and a unique place for watching Icelandic volcano and nature films – as well as northern lights – all year around. And there are refreshments to enjoy while watching the shows by candlelight just like home! Viewers have stated that they understand Iceland "so much better" after watching the films, and that they relive their tours in Iceland watching them.



Authentic Tripadvisor comments:

"Well crafted and informative documentary cinema in a cosy setting." "An amazing find." "Worth a visit, great films." "Surprising place in Reykjavik. Really enjoyed it" "A cosy informative friendly hideaway." "Wonderful, friendly and insightful" "Excellent movies!" "Amazing films and great hosts!" "Lovely little interesting cinema."

SCHEDULED SHOWS EVERY DAY

(valid from 1 April 2016)

Hour

- 17:00** Eyjafjallajökull & Chasing the Northern Lights
- 17:30** Eyjafjallajökull & Chasing the Northern Lights
- 18:00** Birth of an island – The making of Iceland – **English**
(Can be shown in German if everyone is German speaking.)

Other hours:

The Cinema is often open at other times than scheduled and films can then be shown upon request.

Groups:

Pre-arranged shows can be scheduled for groups (6+)

Details on films overleaf.

ENTRANCE FEES:

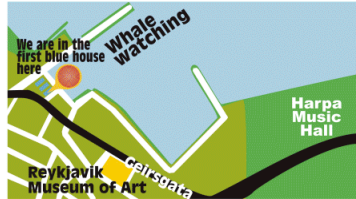
General shows: 1.800 IKR.

Short shows: 1.200 IKR.

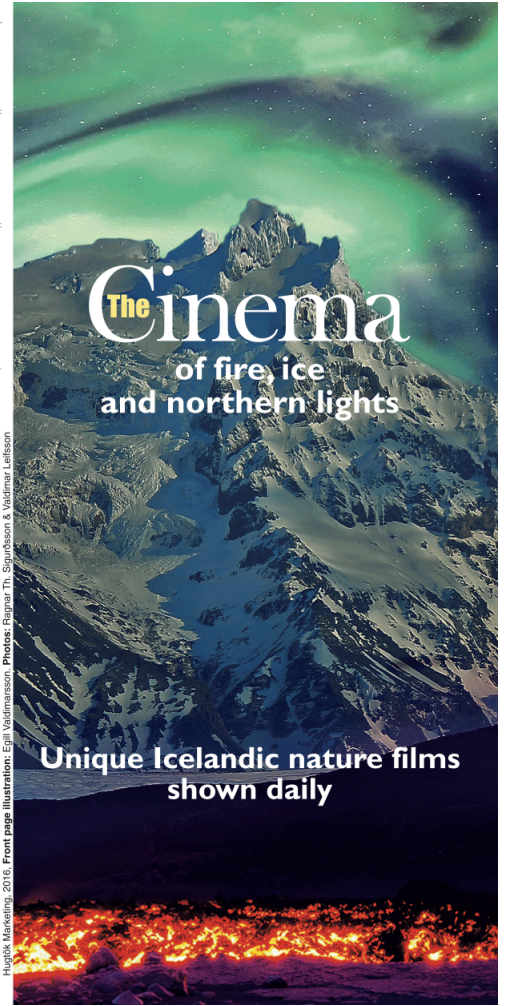
Children 6-16 years 50% off. Younger: Free.
Senior Citizens and Students (w/ID): 15% off.
Discount when buying together more than one show.

Visit our website:
www.thecinema.is

The Cinema is 5 minutes from Reykjavik Museum of Art & 10 minutes from Harpa Music Hall



Old Harbour Village No 2, Geirsgata 7 b, 101 Reykjavik.
Tel: (+354) 898 6628, cinemano2@lifsmynd.is



Short show:

Chasing the Northern Lights

We follow one of Iceland's best known photographers, Ragnar Th. Sigurðsson, on his ventures capturing the elusive Northern Lights – **THE AURORA BOREALIS**. On his journeys he teaches photographers from all over the World how to master this and we get to know why we have these magical lights in the northern sky. Why in Iceland? Why are they intimately linked with Solar flares? Why these particular colours?

Running time: 15 minutes **Audio:** English

EYJAFJALLAJÖKULL – THE ERUPTION!

The volcanic eruption in Eyjafjallajökull in the spring of 2010 – the eruption that disrupted air traffic all over the World. **Devastating powers** deep beneath the Earth crust emerged and the eruption was filmed both from the air and the ground.

Original music score by Icelandic composer heightens the unique experience.

Running time: 14 minutes **Audio:** Music & soundscape

Take the experience home with you!
All available on DVD

Birth of an island – The making of Iceland

An experience about the **creation** the youngest country in Europe and an island still in the making!

How does it happen? Birth of an island explores how Iceland was created through **volcanic eruptions**, why they continue and what effects they have today. **Why are there geysers?** How have the Icelanders learned to harness the natural hot waters from deep below the grounds? Here the forces of nature – glaciers, rivers, waterfalls, the Atlantic and volcanoes constantly mold the island.

Running time: 43 minutes **Audio:** English, German

Vatnajökull National Park

Among Europe's biggest national parks is the Vatnajökull park; reaching over Europe's largest glacier from the South to the North shore of Iceland. The versatility is almost unbelievable; glaciers, glacial rivers, waterfalls, nunataks, glacier mice, flora in the glacier, volcanic eruptions under ice, ravines, deserts, table mountains, tuff mountains, lava, craters, calderas, lakes, birds, reindeers, people, festivities, giant trolls, hidden people?

Running time: 47 minutes **Audio:** English, Icelandic

Thingvellir – The Lake between the Continents

The Thingvellir area is listed on The World Heritage list as one of the places of outstanding universal value for mankind. Here we stand on the actual Mid-Atlantic Ridge (the American and the EurAsian tectonic plates) and the site of the World's oldest Parliament. This film gives you **insight into the unique world** at the lake - its flora, fauna, history and its meaning to the Icelanders. And of course the unrivalled, stunningly wild beauty of the area with its rope lava fields, portrayed and filmed over and over again in series such as for instance The Game of Thrones and movies such as Oblivion.

Awarded by the Ministry of Environment for its outstanding quality.

Running time: 55 minutes **Audio:** Icelandic, English



Valdimar Leifsson studied filmmaking in Los Angeles and has since worked as a producer for Icelandic TV as well as independent filmmaker. Since 1990 he has run his own company, Lifsmynd Film Production. It is a family business where Valdimar's wife, Bryndis, writes many of the film scripts and the oldest son, Arnar Steinn, takes care of production matters. All films in **The Cinema** are filmed and edited by Valdimar and produced by Lifsmynd. Most shown on the National TV.

At The Cinema, in the loft of Old Harbour Village no. 2, you find the remarkable Icelandic nature films by Valdimar Leifsson. The Cinema is run by the film maker and his family.

Hekla - The Entrance to Hell

Iceland's most infamous volcano and the entrance to Hell according to Middle Age beliefs. This film captures Hekla **both at rest and in eruption**. The earliest shots are from the powerful eruption in 1947 followed by shots of several later eruptions.

Running time: 7 minutes **Audio:** Music & soundscape

Thorsmork: The Valley of Thor

One of Iceland's unforgettable beauty spots between glaciers and treacherous rivers. You are taken to the valley where green plants meet the blackness of sands lined with silvery bands of rivers teeming with birdlife. It may well have been the inspiration to **Tolkien** before he drew the outlines of the famous Ring Trilogy. **Running time:** 43 minutes **Audio:** Icelandic, English, German